

Companies from various industries and sizes trust us. Visible successes speak for us.

Daimler FleetBoard GmbH is one of the Europe-wide leading suppliers of telematics-supported internet services for trucks, vans and buses. The modular FleetBoard Services support transportation companies in the optimal handling of long-distance, distribution haulage and building site transportation and in reducing the operating costs of their fleets. The hardware installation for Mercedes-Benz vehicles can be completed at the factory and in the new Actros in serial production. In other vehicle makes the telematics system is available as a retrofit. All vehicles profit from the full service sales and service network. The 100% Daimler subsidiary with headquarters in Stuttgart has received several awards and is a DEKRA-tested and certified company in accordance with DIN EN ISO 9001:2008.

For more information, call 0845 127 0900 or visit www.fleetboard.com (if your mobile phone provider charges for free phone numbers, call 0345 127 0900). The contents of this brochure are not binding and the right is reserved to make modifications without notice.



FleetBoard Vehicle Management

Reduce consumption. Increase efficiency. For all brands.



Optimal Fleet Management with FleetBoard!



Perfectly Suited for Long-Distance, Distribution and Construction Site Traffic.

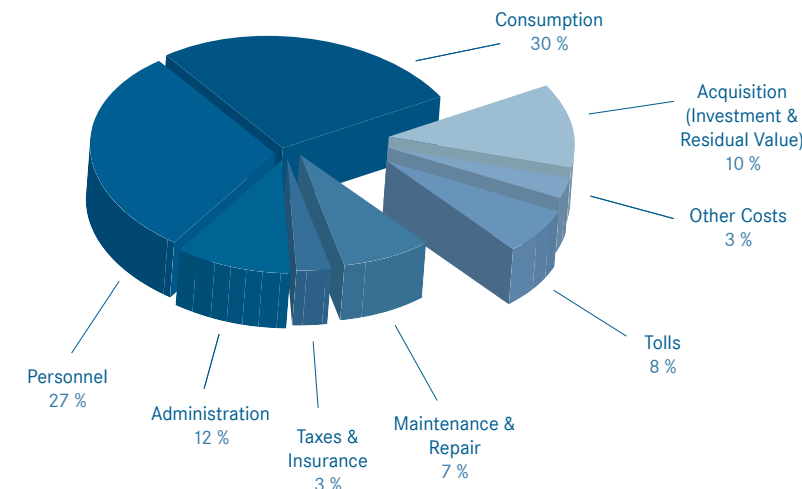
With FleetBoard, fleets are managed economically. Systems to determine key performance indicators, such as the proven FleetBoard Performance Analysis, provide long-term assistance to management and drivers in reaching a preventative driving style, which reduces wear and consumption. Maintenance intervals up to 150,000 km* and shorter stop times also increase the economic viability. The unique combination of vehicle positions, communication with drivers, display of remaining driving times, fuel savings up to 15% and the integration of all of this into your own IT software makes FleetBoard an indispensable fleet management system.

With FleetBoard you can influence up to 80% of the costs.

If you want economic trips today and in the future, you have to look at the costs closely. Over the entire service life of a vehicle, the fuel consumption as well as personnel and administrative costs are the decisive factors in deciding the economic feasibility of your fleet. With FleetBoard your trips are less expensive and more profitable from the very first day.

Start reducing now:

- Fuel costs and CO₂ emissions
- Administration costs
- Maintenance and wear costs
- Idle times



The specifications in per cent in the diagram above are based on the total operational costs structure of a German transport company (Bundesverband Güterkraftverkehr Logistik und Entsorgung e. V., German Federal Association for Road Haulage, Logistics, and Disposal, data retrieved in 2012).

Via the vehicle interface, the permanently installed on-board computer uses a modem and GPS receiver to access the vehicle electronics and utilises GSM/GPRS to send vehicle, driver and order data to the FleetBoard servers. From there, all important fleet information is saved and password-protected before being sent over the internet.



Reach your objectives with FleetBoard.

- Reductions in fuel consumption and CO₂ by up to 15% possible
- Trained and motivated drivers
- Less accidents due to increased driving safety
- Increased vehicle availability
- Less detours and fewer empty trips
- More efficient and less expensive communication
- Lower administrative costs
- Higher customer satisfaction, e.g. with delay notifications

Our know-how for your success:

- Flexible integration into your company's IT network over a standard interface
- Easy access to data, worldwide using the FleetBoard Cockpit and the FleetBoard App
- Flat rate for services, including GPRS communication costs
- Quality-tested services and automotive-certified hardware
- Updates via remote maintenance
- Computer centre using banking standards



Reduce your fuel costs by up to 15%.



Start saving by the mile.

- Objective evaluation of the driving style enables individual training
- Comparability of the driving style also across brands for mixed fleets
- Graphic display of important criteria makes interpretation easier
- Reduced fuel consumption and wear
- Less accidents due to more preventative driving style
- Driver's grade as a basis for bonus systems
- Motivated drivers

FleetBoard Performance Analysis: Saving fuel from the start.

FleetBoard Performance Analysis records and processes technical data from every utility vehicle*. The data is used to rate the driving style of the drivers in grades. Individual tips in driver training contribute to improving the driving style. This enables the long-lasting economic handling of the fleet. Customers report that fuel savings of up to 15% can be achieved!

The FleetBoard Performance Analysis provides, among other things, the following information:

- FleetBoard driver's grade
- Speeds
- Braking
- Engine operation M/n
- Stops and idle times with the engine running
- Degree of difficulty with average inclines and vehicle weight

Additionally in Mercedes-Benz trucks:

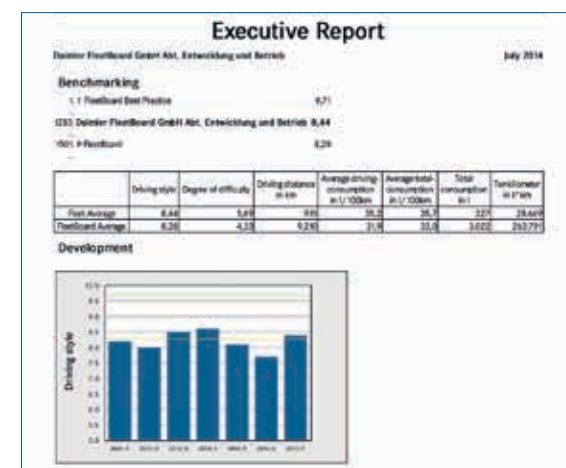
- Eco-Roll percentage
- Drive programs
- AdBlue® consumption
- PPC

FleetBoard Reports: Monthly reports, compact and directly on your desk. **

FleetBoard reports supply a compact overview and evaluation of the online FleetBoard data at a glance for companies and fleet managers.

Among other things, the FleetBoard Reports provide the following information:

- A total overview of the most important data and of the development of the fleet during the last three months.



Executive Report: monthly reports for your fleet.

Mixed fleets profit as well.

FleetBoard provides impartial, comparable data from all vehicles* in your fleet. This provides an overview of the mileage, operating material levels, consumption, and deployment profiles of the

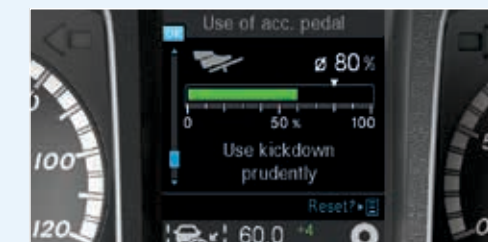


drivers at one glance, including an evaluation of the overall driving styles – according to driver or vehicle, as required. This makes it possible to determine the causes for high consumption and to use this information for individual driver training. Since only the factors that can be influenced by the driver are considered during the evaluation, the Performance Analysis is the optimal basis for a fair bonus system. This is also fair because the FleetBoard DriverCard or digital tachograph card makes reliable, driver-specific evaluation possible.



FleetBoard Performance Analysis: The overview screen (to the right) and the detail view (to the left) ensure the fast and clearly represented comparability of vehicles and drivers within the fleet.

Save even more when driving: FleetBoard in the Actros, Arocs, Antos and new Atego.



FleetBoard Eco-Support

- Provides a rolling analysis of the current driving style
- Immediate conclusions on the driver's situation
- In-time improvement of the driver's driving style

New: Extended Performance Analysis for the Actros, Arocs, Antos and new Atego

Even more information to interpret driving styles, e.g.:

- Eco-Roll percentage
- Drive programs
- AdBlue® consumption
- PPC

* with the corresponding vehicle electronic system (standard FMS interface)
** only in connection with the Performance Analysis service

Seamless Documentation of Your Tours.



All vehicles at a click.

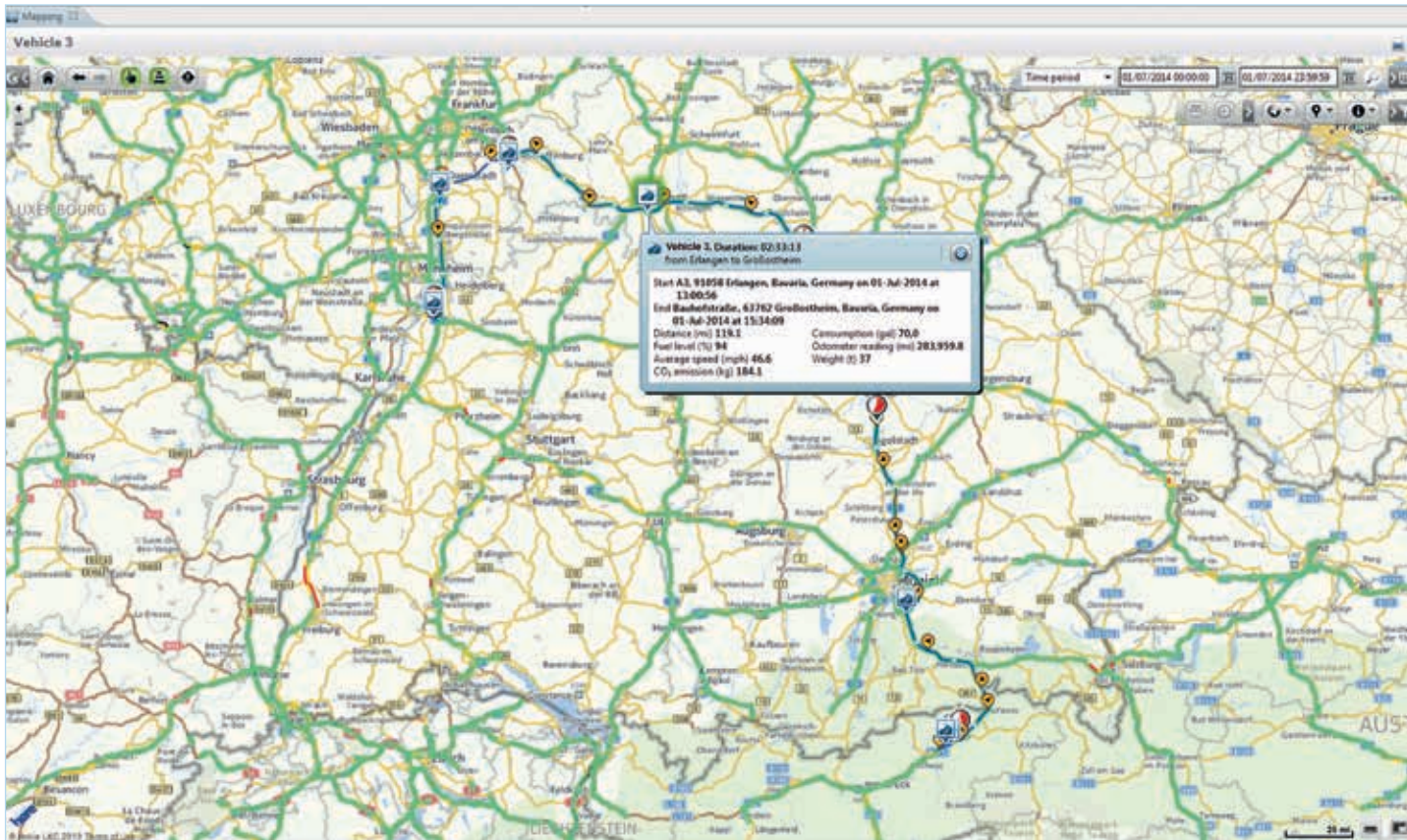
- All vehicles at a glance on the digital map
- Management using area monitoring
- Transparency thanks to European-wide route calculation incl. calculation of toll-roads (for Germany)
- High service quality through transparency

FleetBoard Mapping and FleetBoard Track&Trace: The vehicles in sight at any time.

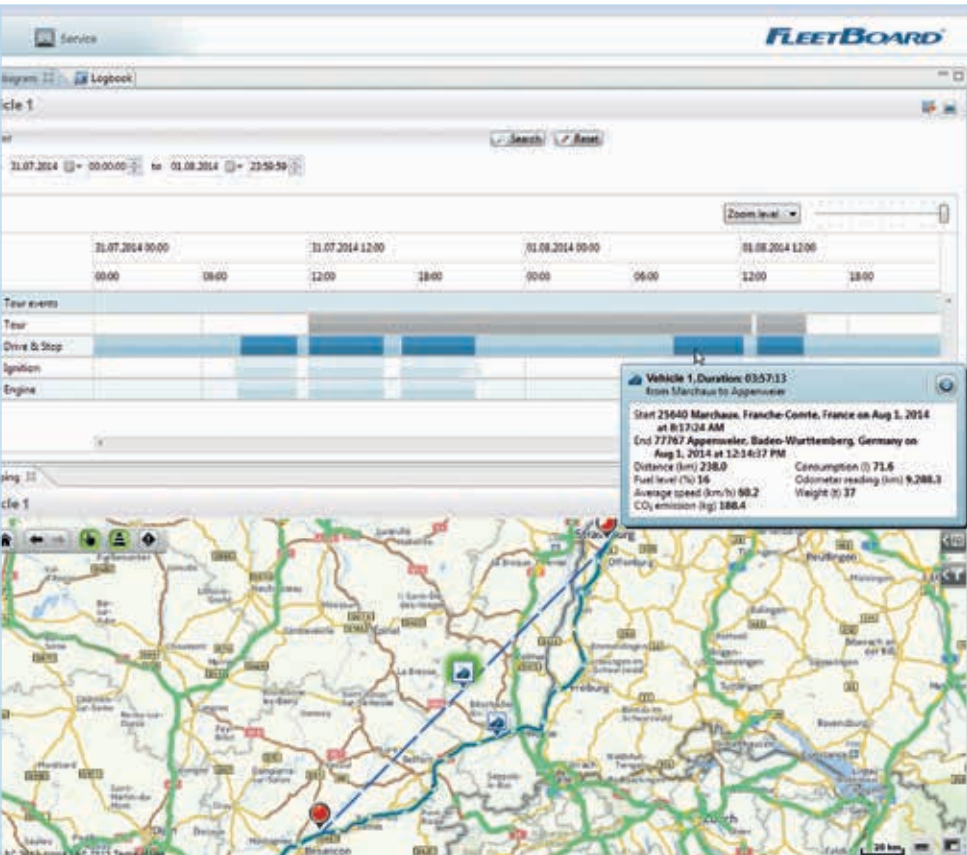
FleetBoard Mapping lets you open a graphic representation of various data for the vehicles in the form of a digital road map. The planned route or the distance travelled can be tracked exactly (GPS tracking).

FleetBoard Mapping and FleetBoard Track&Trace provide, among other things, the following information:

- 30-second position interval, transmission every 10 min (optional)
- FleetBoard service partner location
- Customer POIs (Points of Interest)
- Utility vehicle-specific map
- Integrated route planning
- Area monitoring with reporting of arrival and departure



The vehicle position, traffic flow, tour progress, stop times, and the consumption during the tour can be displayed for each vehicle on a digital, worldwide map.



Display of locations, trips and pause times (with consumption) as well as tachograph data in the FleetBoard Trip Records.

FleetBoard Trip Records: Your electronic logbook:

With electronic trip records you can track the trips and idle times of the vehicles and relevant transport events (trips and pauses).

FleetBoard Trip Records provide, among other things, the following information:

- Positions
- Trip times
- Trip diagram
- Pause times
- Driver name
- Fuel level
- Odometer reading
- Weight



Your trucks are there where you earn your money: on the road.

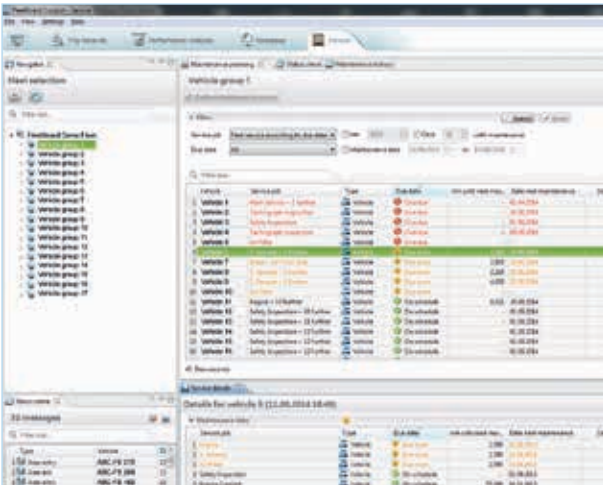


Vehicle and fleet management expertise.

- 100% Daimler subsidiary offers investment protection
- Available in more than 50 countries
- Modular service portfolio for individual composition
- Telematics services for drivers, vehicle and logistics management
- Available for all truck brands
- For trucks, vans and buses
- Hardware ex-factory for Mercedes-Benz trucks, retrofitting for most brands
- In-depth training and after sales offers

FleetBoard Service and FleetBoard Uptime*: Optimal maintenance intervals, fast reaction in the event of an emergency.

How worn are the brake linings? How many kilometres can the vehicle remain on the road until the next maintenance appointment is due? This and more information about wear parts and consumables for your vehicle is available at a click in FleetBoard Service. This enables preventative maintenance of the vehicle and the best possible planning of maintenance intervals to increase the vehicle availability.



Maintenance prognosis overview:
Bundled planning of workshop visits.

FleetBoard Service provides the following information, among other things:

- Technical condition of the vehicle
- Tyre pressure
- Maintenance due for maintenance jobs
- Load-related service intervals
- Information about wear parts and consumables

FleetBoard Uptime* provides the following information:

- Electrical control units
- Active and stored error codes

* Availability depends on country



Service details: Overview of the technical status of the vehicle

Professional maintenance management.

In connection with the FleetBoard Service, telematics-based professional maintenance management is available. This regularly transmits maintenance and wear data from the vehicle to the service partner of your choice, recorded and evaluated online – without your truck having to go to the shop. Thus the maintenance and wear potential can be optimally exploited and upcoming maintenance work can be bundled.

Mercedes-Benz Service24h with Telediagnosis.* *

In the event of a breakdown, the vehicle malfunctions are transmitted to the Service24h technician at the press of a button. The technician analyses the data before leaving for the breakdown location and can prepare for the necessary repairs – for example by taking along the necessary Mercedes-Benz GenuineParts. This means help arrives faster and more effectively.

* * upon request available in connection with FleetBoard Uptime

Managing the fleet from the road with the FleetBoard App:

With the FleetBoard App, all important fleet information is on hand while you are on the road. With your android-based smartphone, iPhone or



iPad you can access current and historic data. In this way you are aware of all vehicle positions or remaining driving times and can communicate with the drivers. A driver with sufficient remaining driving time can be localised in the vicinity of a spontaneous order and the question of whether a tour can be completed as planned can be answered quickly. Short-term transport requests or delays due to traffic can be reacted to quickly – in an emergency, even at night.

FleetBoard for mixed fleets.



Installation requirements:

The provision of FleetBoard hardware is available for Mercedes-Benz trucks ex-factory and as a retrofit for many other makes and existing vehicles – this requires the FMS interface. A retrofit of the FMS interface in existing vehicles is often possible.

Requirements for the use of the FleetBoard services:

- The installation of the FleetBoard TiiRec onboard computer
- The conclusion of a framework agreement for the FleetBoard service

Profit in all Areas with the FleetBoard Services!

Network the fleet today,
drive economically tomorrow.

FleetBoard means:
Costs down, efficiency up.



The all-round carefree solution from FleetBoard:



Individual consulting

- Individual analysis and consulting with sales representatives and/or FleetBoard consultants
- Industry- and company-specific selection of the scope of software and hardware
- Integration of the FleetBoard services into in-house software and IT



Training and implementation

- System training after the installation of the hardware
- Seminars for dispatchers, fleet directors and managers
- Driver coaching, for example on FleetBoard for new Actros



After Sales

- Mercedes-Benz service network for follow-up orders, exchanges or installation of the FleetBoard hardware
- 130 certified FleetBoard premium partners with expert knowledge
- Use of the FleetBoard functionalities for proactive maintenance management and optimisation of the service trips of customer vehicles



Hotline & Support

- Free technical support in 10 languages
- High technical competence of FleetBoard experts
- Guaranteed high availability and fast reaction times
- Service Account Manager available as permanent contact partner

Our expertise ...

Practical:

- Flexible integration into your company's IT network
- Worldwide access to your data, over the internet or with an app
- Service flat rate incl. GPRS communication costs
- Comprehensive support by experienced experts

Premium quality:

- Quality-checked services
- Automotive-certified end equipment
- Modular service selection for all industries
- Can be used with any brand

Secure investment:

- 100% Daimler subsidiary
- Computer centre at banking standards
- Amortisation in less than 1 year possible
- Updates using remote maintenance

... for your success:



Reduce costs:

- Up to 15% less fuel and wear
- Increased vehicle availability
- Affordable communication between the driver and headquarters
- Less re-routing and fewer empty trips



Increase productivity:

- Motivated and trained drivers
- Full-value logistics with individual adaptation possibilities
- More satisfied customers programs with automated order processing
- Transparency of locations and tour progress



Optimise procedures:

- Error-free communication
- Transmission of geo-encoded addresses
- Monitoring of driving times and rest periods
- Compliance with all legal obligations to document and archive data

